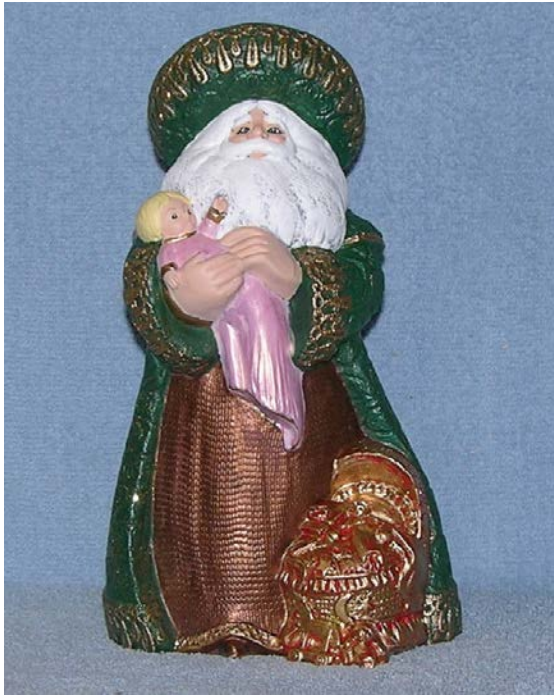


G2871 Guardian Santa



[Click here to order g2871 Guardian Santa](#)

NOTE: BC means Basecoat; **DB** means Dry Brush; **HL** means High Light; **WB** means Wipe Back using #763 Antique Media; **PB** means Pat Back with soft cloth. **Spray** means spray with Perfect Matte Spray. **NOTE: Always refer to picture for placement of colors.**

Ann's Ceramics
801 McClelland Drive
Norman, OK 73026
405.573.5911

www.annsceramics.com
linda@annsceramics.com

BC #902 Black. DB flesh area #939 Warm Beige. DB hat and robe #918 Forest Green. DB hair #900 White. DB dress & bassinette #910 Scarlet Red. Antique dress and bassinette #701 Black & WB to HL. Antique coat #708 Emerald Green and WB to HL.

DB baby's dress #915 Light Pink or #946 Whisper Blue. DB #900 White to HL. Paint hair #907 Caramel and HL #930 Sun Ray.

Paint eyes #901 Bone, irises #923 Intense Blue & pupils, lashes & lash lines #902 Black. HL #901 Bone. Blush all cheeks & lips #913 Blush.

Spray. Apply Glossy Sealer to all eyes. Apply Gold Leaf to basket and items inside the basket & dress. DB #971 Gold on hat trim, trim on arms & hem of coat. Paint wrist bands #973 New Penny.

[Click here to order Individual Colors](#)

[Click here to order g3019 Paint Kit](#)

Individual Colors:

701 Black
708 Emerald
Matte Spray
763 Antique Media
900 White
901 Bone
902 Black
907 Caramel
910 Scarlet Red
913 Blush

915 Light Pink
918 Forest Green
923 Intense Blue
930 Sun Ray
939 Warm Beige
946 Whisper Blue
971 Gold
972 Silver
973 New Penny
Glossy Sealer