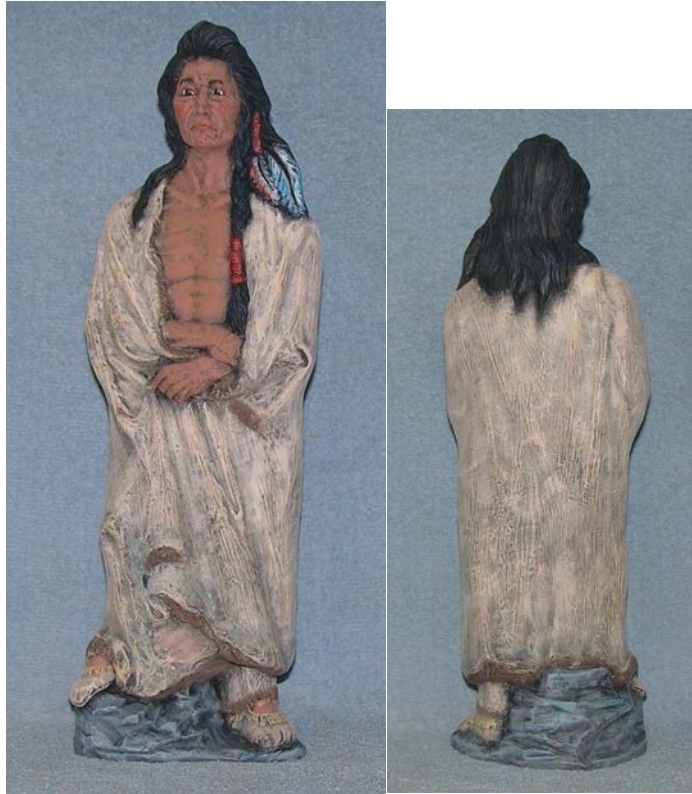


CE2620 – Indian Chief



Ann's Ceramics
801 McClelland Drive
Norman, OK 73026
405-573-5911
www.annsceramics.com
Linda@annsceramics.com

[Click here to purchase ce2620 Chief Bisque](#)

NOTE: BC means Basecoat; DB means Dry Brush; HL means High Light; WB means Wipe Back using #763 Antique Media; PB means Pat Back with soft cloth. Spray means spray with a Matt Spray. **NOTE: Always refer to picture for placement of colors.**

BC #602 Black Wash. DB all flesh areas #941 Light Terra mixed with a touch of #951 Navajo (this will take 3-4 coats to achieve the desired effect). Blush cheeks #911 Country Rust. Paint eyes #901 Bone & irises & eyebrows #902 Black. HL #901 Bone. Touch up hair with #902 Black. DB hair #922 Navy Blue and HL #932 Blueberry. Paint lash lines and lashes #902 Black.

DB blanket #948 Bamboo Beige followed by #940 Toffee, then #939 Warm Beige and finally #953 Vanilla. Randomly DB #907 Caramel over blanket. DB #923 Intense Blue (use same dirty brush) around edge of blanket. DB buffalo trim on blanket #905 Rich Brown and HL #906 Cocoa Brown.

DB rocks #904 Smoke and HL #903 Light Grey. LIGHTLY DB #923 Intense Blue randomly on rocks. DB #910 Scarlett Red over ties in hair. DB #900 White over feathers. DB #923 Intense Blue & #910 Scarlett over the edge of the feathers (see picture for placement).

Spray. Paint eyes with Glossy Sealer and DB Glossy Sealer over rocks.

[Click here to order Individual Colors](#)

[Click here to order the ce2620 Paint Kit](#)

Individual Colors

602 Black Wash
900 White
901 Bone
902 Black
905 Rich Brown
906 Cocoa Brown
907 Caramel
910 Scarlett Red
911 Country Rush
922 Navy
923 Intense Blue
932 Blueberry
939 Warm Beige
940 Toffee
941 Light Terra
948 Bamboo Beige
951 Vanilla
Glossy Sealer
Matt Spray